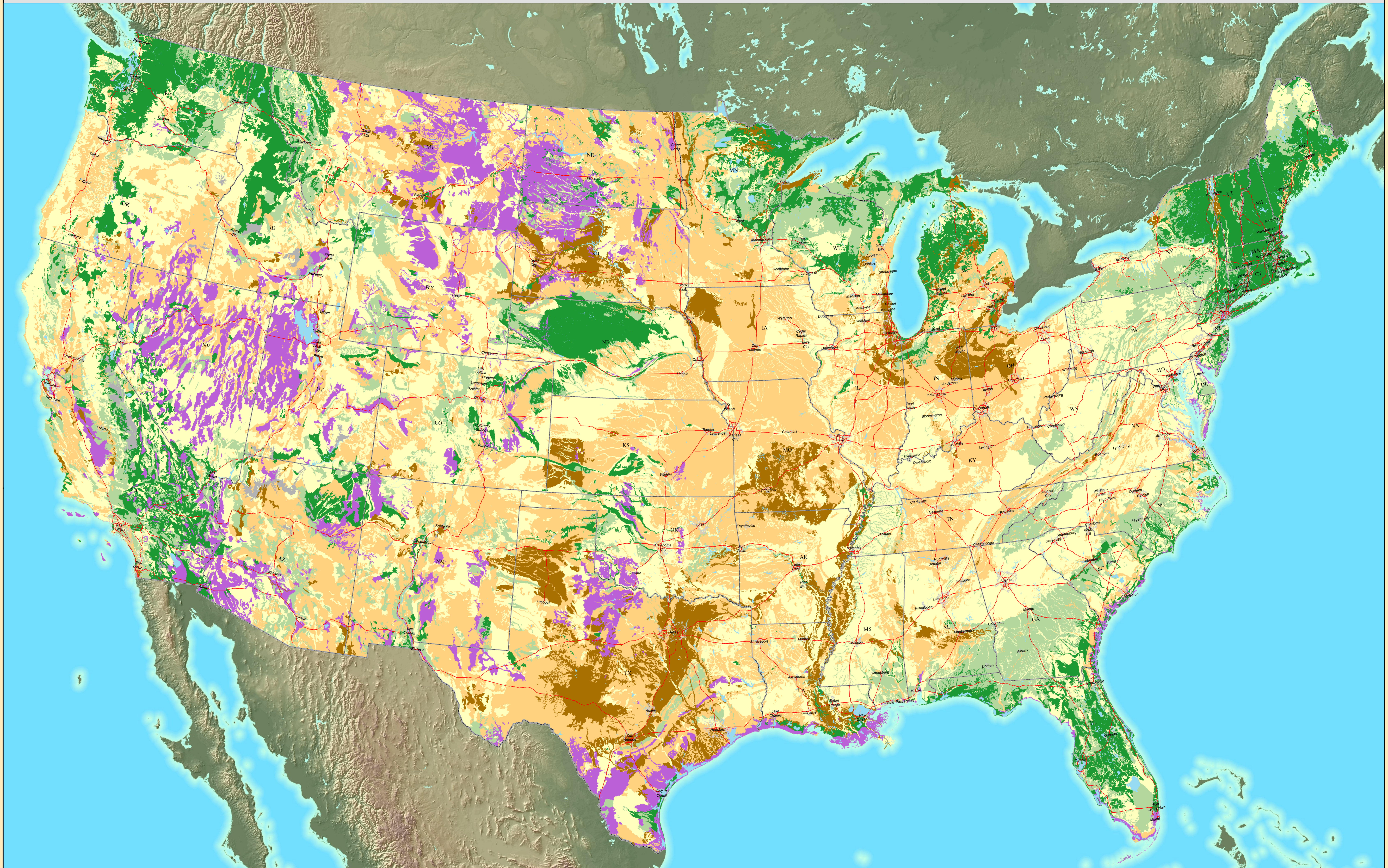


# Ground-Penetrating Radar Suitability Map



**GPR Index**

	1 Very High		Water
	2 High		Large Water Body
	3 Moderate		Not Digitized
	4 Low		Urban Areas
	5 Very Low		International Border
	6 Unsuited		State Line
	Not Rated		Interstate Highway



USDA-NRCS. 2009. Ground Penetrating Radar Suitability - US (map). Using ArcGIS, Version 9.2 (Environmental Systems Research Institute, Inc., Redlands, CA), National Soil Survey Center, Lincoln, Nebraska, Scale 1:1,500,000. Map projection for continental U.S. using Albers Equal Area, North American Datum 1983 (NAD83). Map projection for Hawaii using Hawaii State Plane NAD83. Map projection for Puerto Rico and U.S. Virgin Islands NAD83.

USDA-NRCS. 2008. Digital General Soils Map (GSM) version 2. Continental United States, Hawaii, Puerto Rico and U.S. Virgin Islands. Soil Data Map Source (<http://soildata.nrcs.usda.gov>) December 2008 edition.

Soil Survey Staff. 2009. NSSC DATA - Ground Penetrating Radar Suitability Index (GPRSI) (data file). National Soil Information System (Evaluation Draft 1/22/2009). USDA Natural Resource Conservation Service, National Soil Survey Center, Lincoln, Nebraska. (<http://nss.usda.gov>)

Current State and Equivalent. TIGERLine 2008 (cartographic boundary file, 11\_2008\_us\_state.zip). 2008. U.S. Census Bureau. Available FTP: <ftp://ftp.census.gov/ipeds/data/geographies/tiger2008/> (Accessed on February 20, 2009)

Urban Areas (generalized cartographic boundary file, ua99\_00\_010\_01\_2000). U.S. Census Bureau. Available FTP: [ftp://ftp.census.gov/ipeds/data/geographies/ua99\\_00\\_010\\_01\\_2000/](ftp://ftp.census.gov/ipeds/data/geographies/ua99_00_010_01_2000/) (Accessed on February 20, 2009)

USGS. Analytical Hillshade computed from 1 kilometer National Elevation Dataset (NED50) using the following parameters: 315 degrees azimuth, 45 degree azimuth, and z factor 1x. Prepared by USDA-NRCS-NSSC, Lincoln, NE.

**NRCS** Natural Resources Conservation Service

